

**ROYAL CIVIL SERVICE COMMISSION**  
**BCSE-B.ED GRADUATES EXAMINATION 2011**  
**PAPER III: TEACHER APTITUDE TEST**

QUESTION PAPER SERIES:

A

**ROLL NUMBER: BCSE(B.Ed)-2011- \_\_\_\_\_**

---

**Date** : January 13, 2012  
**Total Marks** : 100  
**Total Questions** : 100  
**Examination Time** : 180 Minutes (3 Hours)  
**Reading Time** : 15 Minutes

---

**INSTRUCTIONS:**

1. Write your Registration Number clearly in the space provided above as well as in the OMR Answer Sheet.
  2. The first 15 minutes are to check the number of pages, printing errors, clarify doubts and to read the instructions (Question Paper and Answer Sheet). You are **NOT PERMITTED TO WRITE** during this time.
  3. The Question Paper consists of **34 pages** (excluding this page) and **4 blank pages for rough work**. The Paper is divided into Four Sections – namely **Section I, II, III & IV** as follows:
    - Section I: Logical Reasoning
    - Section II: Basic Data Interpretation
    - Section III: Problem Solving
    - Section IV: General Awareness
  4. This paper consists of 100 Multiple Choice Questions each carrying 1 Mark. **All Questions are compulsory.**
  5. **All answers should be marked on the OMR Answer Sheet.**
  6. Use the PENCIL provided to you to mark your Answers. Do not use a Pen.
  7. Use the blank sheets at the back of the Question Paper for rough work. Use of any other paper is not permitted.
- 

**GOOD LUCK!**

## SECTION I

### LOGICAL REASONING

This section consists of 25 multiple-choice questions. Answer all the questions. Each question has four optional responses (A, B, C, D). Choose the correct response. *(25 x 1 = 25 Marks)*

- 1) Newspapers in Bhutan have reported increasing interest in the works of William Shakespeare among teachers and students. One wonders why there is a renewed interest in the author. As scholars point out, the depth of Shakespeare's understanding of both male and female characters as evident in his plays is unparalleled and amazing even today.

Which of the following statements best supports the author's argument in the paragraph?

- A. Shakespeare's characters are more interesting than fictional characters today.
  - B. people even today are interested in Shakespeare's work because of the characters.
  - C. academic scholars are putting together an anthology of Shakespeare's work.
  - D. Shakespeare was a psychiatrist as well as a playwright.
- 2) 'Posthumous Publication' occurs when a book is published after the author's death. Which situation below is the best example of Posthumous Publication?
- A. Sangay's illness took his life before he was able to enjoy the amazing early reviews of his novel.
  - B. Dechen's publisher cancels her book contract after she fails to deliver the manuscript on time.
  - C. Dawa never thought he'd live to see his third book published.
  - D. Pema is honored with a prestigious literary award for her writing career and her daughter accepts the award on behalf of her deceased mother.
- 3) Penjore was given a list of 20 courses in his postgraduate study. All the courses but 9 were compulsory. How many courses were optional?
- A. nine courses were optional
  - B. seven courses were optional
  - C. eleven courses were optional
  - D. two courses were optional

- 4) From the options given, choose the pair that best represents a similar relationship to the one expressed in this pair of words -- PROFESSOR : ERUDITE
- A. driver : licensed
  - B. inventor : imaginative
  - C. actor: vicious
  - D. moderator : sinister
- 5) This question has two statements numbered I and II. There may be cause and effect relationships between the two statements. Read both the statements and choose the correct answer from the options given.

Statements:

- I. The school authority has asked Class 12 students to attend special classes to be conducted on Sundays.
- II. The parents of Class 12 students have withdrawn their children from attending private tuitions conducted on Sundays.

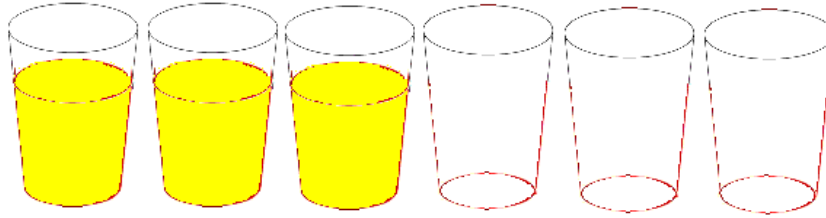
- A. statement I is the cause and statement II is its effect
  - B. statement II is the cause and statement I is its effect
  - C. both statements I and II are independent causes
  - D. both statements I and II are effects of independent causes
- 6) Which word does NOT belong with the others?
- A. book
  - B. index
  - C. glossary
  - D. bibliography
- 7) Find the statement that must be true according to the given passage.

Last summer, Class 10 students of Drugyel Higher Secondary School spent two weeks at a summer camp. There, they went hiking, rock climbing, bird watching, and mushroom picking. This summer, these students look forward to attending a two-week music camp, where they hope to sing, dance, and learn to play the guitar.

- A. these students' parents want them to learn to play the guitar.
- B. these students prefer music to outdoor activities.
- C. these students go to some type of camp every summer.
- D. these students like to sing and dance.

- 8) In a maths class Chuki divides 60 chalk sticks by half and adds fifteen. What answer does she show the Class?
- A. 129 chalk sticks
  - B. 130 chalk sticks
  - C. 135 chalk sticks
  - D. 145 chalk sticks
- 9) Look closely at the letter pattern and choose the series from the options given that will correctly fill the blank at the end of the series.
- FAG, GAF, HAI, IAH, \_\_\_\_\_
- A. JAK
  - B. HAL
  - C. HAK
  - D. JAI
- 10) Karma runs in an annual school marathon competition. He overtakes the second person. What position is he in?
- A. first
  - B. second
  - C. third
  - D. last
- 11) A school organized a knockout football competition in which 23 teams played. What was the least number of matches they needed to play to decide the winner?
- A. 11 matches
  - B. 62 matches
  - C. 21 matches
  - D. 22 matches

- 12) The following figure has six glasses three of which are filled with lemon juice and the other three are empty. By which of the following actions can you make the full and empty glasses alternate?



- A. pouring the lemon juice from the first glass into the fifth
  - B. pouring the lemon juice from the second glass into the sixth
  - C. pouring the lemon juice from the second glass into the fifth
  - D. pouring the lemon juice from the third glass into the fourth
- 13) Which of the following words does NOT belong with the others?
- A) teacher
  - B) professor
  - C) writer
  - D) dean
- 14) Which of the following words does not belong with the others?
- A) periodical
  - B) academic Journal
  - C) thesis
  - D) thesaurus
- 15) Which of the following words does NOT belong with the others?

- A. unique
- B. rare
- C. beautiful
- D. exceptional

- 16) What is the missing letter in this series: a b d h ?
- A. k
  - B. p
  - C. o
  - D. r
- 17) Which of the following words is the closest in association with KNOWLEDGE?
- A. syllabus
  - B. learning
  - C. pedagogy
  - D. psychology
- 18) Pointing out to an elderly woman, Dechen said, "She is the daughter of the woman who is the mother of the husband of my mother". What is the woman's relationship to Dechen?
- A. grand daughter
  - B. sister in-law
  - C. aunt
  - D. daughter
- 19) What is the missing letter in this series: x ? p l h
- A. z
  - B. u
  - C. t
  - D. w
- 20) Which of the following words does not belong with the others?
- A. role plays
  - B. mind mapping
  - C. zone of proximal development
  - D. symposiums

- 21) A school principal receives complaints from parents about bullying in school during recess. He wants to investigate and end this situation as soon as possible. So he asks the Class teachers to watch closely. Which situation should the teachers report to the principal?
- A. a girl is sitting glumly on a bench reading a book and not interacting with her peers.
  - B. four boys are surrounding another boy and seem to have possession of his lunch pack.
  - C. two girls are playing basketball and are arguing over the last basket scored.
  - D. three boys are huddled over a handheld video game, which isn't supposed to be on school grounds.
- 22) An Informal Gathering occurs when a group of people get together in a casual, relaxed manner. Which situation below is the best example of an Informal Gathering?
- A. the book club meets on the first Thursday evening of every month.
  - B. after finding out about his promotion, Jigme and a few co-workers went out for a quick drink after work.
  - C. Tshoki sends out 25 invitations for her daughter's wedding.
  - D. whenever she eats at Memey's restaurant, Chimmi seems to run into Palden.
- 23) In a certain Higher Secondary School in Paro, a Five-Day Suspension occurs when a student is not permitted to attend school for five days for (1) physically assaulting another student, a teacher, or a school employee or (2) wilfully damaging or defacing school property. Which situation below is the best example of a Five-Day Suspension?
- A. Chuki gets caught cheating on a math test for the second time and is suspended from school.
  - B. Tobgay is asked to leave the classroom due to his constant disruptions.
  - C. Deki uses a marker pen to write derogatory comments on classroom walls and furniture and she is given a suspension.
  - D. Seldon tells her class that students who fail the midterm exam will be expected to stay after school for tutoring help.
- 24) Which of the following is not an advantage of Socratic questioning?
- A. it is inexpensive
  - B. it reaches a large audience
  - C. it increases the ability to ask structured questions
  - D. it encourages learner activity

25) If you unscramble the letters UURLMCIUCR, you will get the name of an:

- A. educational philosopher
- B. educational publication
- C. educational concept
- D. educational institution

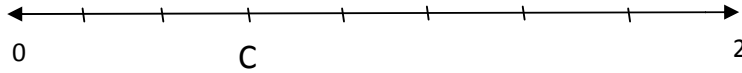


## SECTION II

### BASIC DATA INTERPRETATION

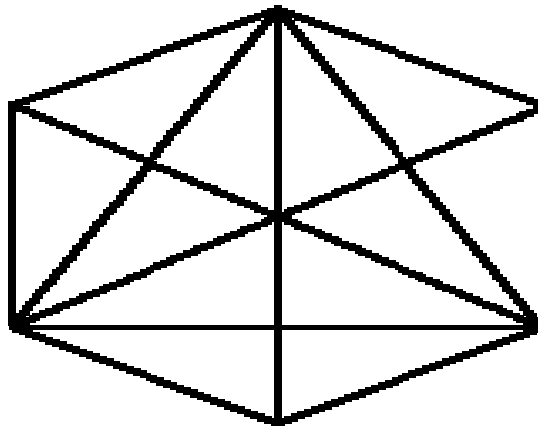
This section consists of 25 multiple-choice questions. Answer all the questions. Each question has four optional responses (A, B, C, D). Choose the correct response. *(25 x 1 = 25 Marks)*

- 1) A number line from 0 to 2 is divided into 8 equal segments. What fraction names point C?



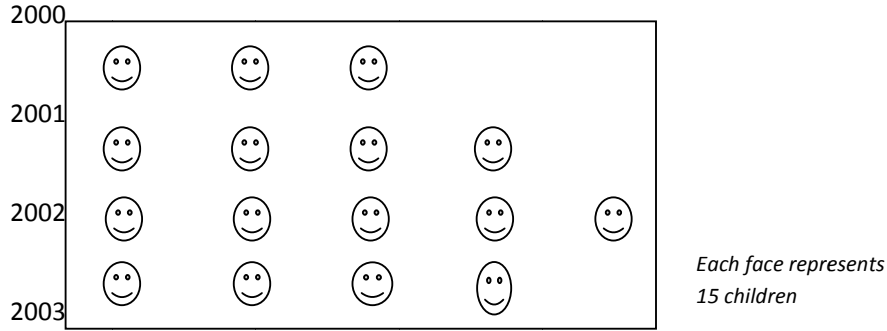
- A.  $\frac{2}{6}$   
B.  $\frac{5}{8}$   
C.  $\frac{6}{8}$   
D.  $\frac{12}{8}$
- 2) How many triangles are in the diagram given below?

- A. 30  
B. 37  
C. 40  
D. 39



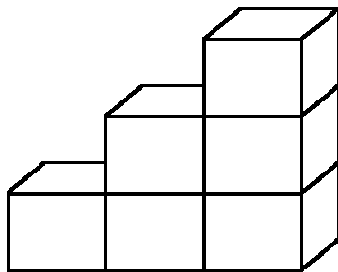
**Use the following diagram to answer question 3 and 4**

The Number of Children entering Class PP from 2000 – 2003 in a school



- 3) What was the average number of children entering class PP each year from 2000 – 2003?
- A. 55
  - B. 60
  - C. 45
  - D. 65
- 4) If 90 children entered class PP in 2004, How many smiley faces would represent this number?
- A. 5
  - B. 7
  - C. 6
  - D. 8

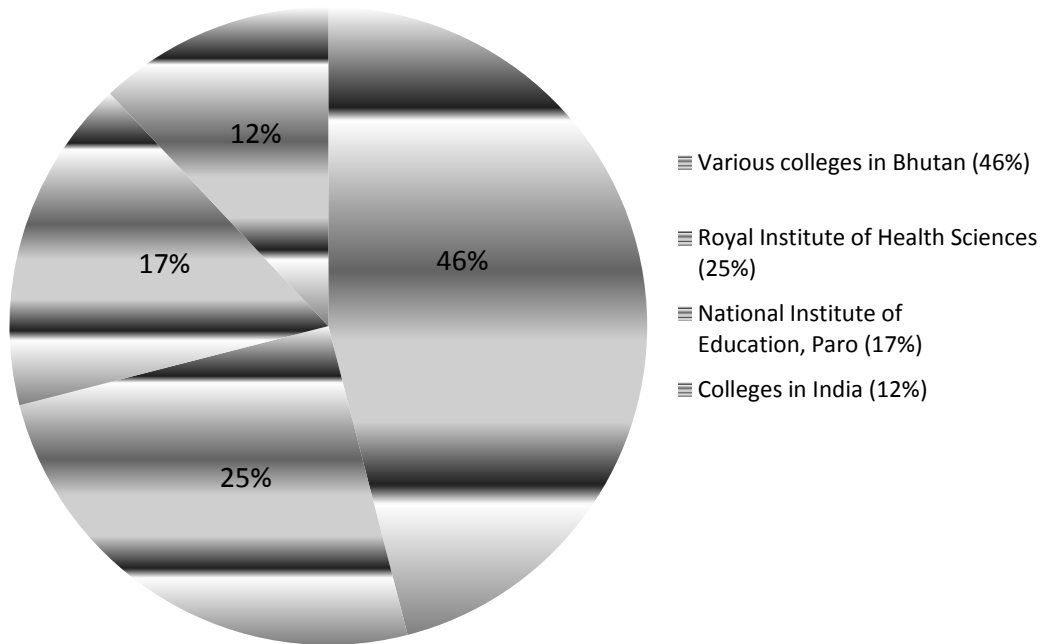
**Use the diagram given below to answer the question 5**



- 5) How many cubes do you need to make the steps 8 steps high?
- A. 20 cubes
  - B. 30 cubes
  - C. 28 cubes
  - D. 36 cubes

**Use the following diagram to answer question 6 and 7**

**% of class X students entering various training institutes and colleges in Bhutan in 2010**



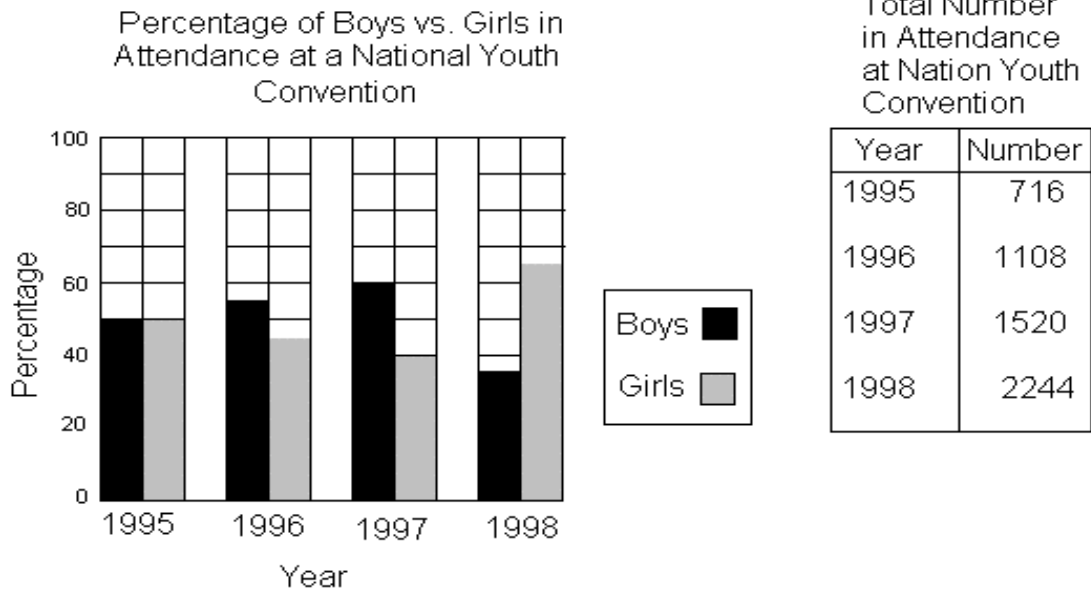
6) If 7000 students sat for the class X exam in 2010, how many students entered the various colleges in Bhutan?

- A. 2900
- B. 3100
- C. 3220
- D. 3200

7) If 1700 students joined the Royal Institute of Health Sciences in 2010, how many students passed out from class X in 2010?

- A. 6800
- B. 7000
- C. 6900
- D. 6000

**Use the following graph to answer question 8**



8) How many boys attended the 1995 National Youth Convention?

- A. 390
- B. 358
- C. 540
- D. 407

**Use the following table to answer questions 9 and 10**

Student	Subject (Marks obtained)					
	Maths	Chemistry	Physics	Geography	History	Computer Science
Pema	90	50	90	60	70	80
Tashi	100	80	80	40	80	70
Karma	90	60	70	70	90	70
Deki	80	65	80	80	60	60
Lemo	80	65	85	95	50	90
Yeshey	70	75	65	85	40	60
Sonam	65	35	50	77	80	80

9) In which subject is the overall percentage the best?

- A. Mathematics
- B. Chemistry
- C. History
- D. Physics

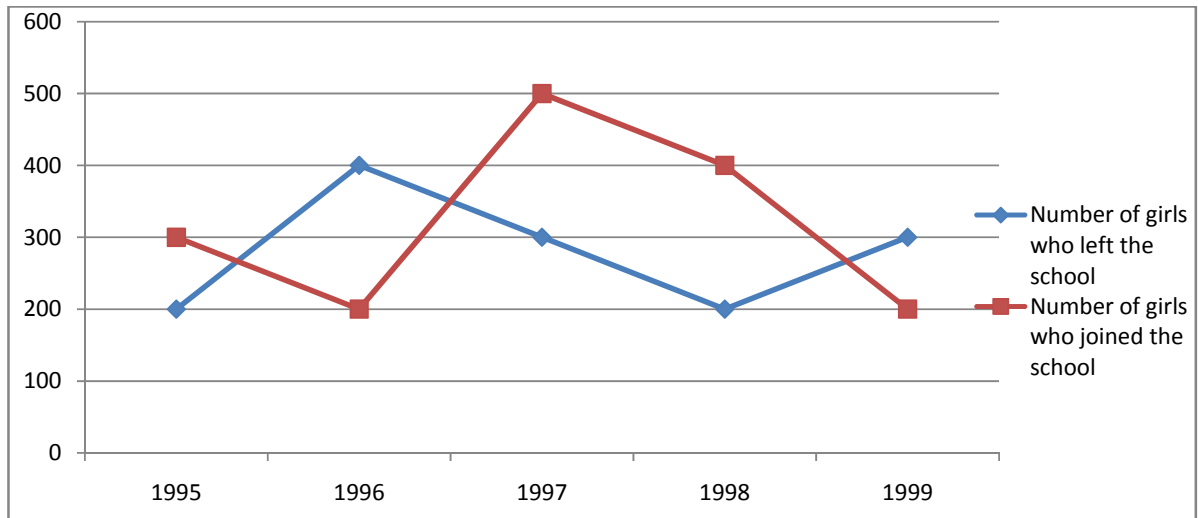
10) The number of students who obtained 60% and above in all subjects are:

- A. 1
- B. 2
- C. 3
- D. None

**The line graph given below is to be used to answer question 11 and 12**

The following line graph shows the number of girls who joined and left a school in a school in the beginning of the year for five years, from 1995 – 1999.

The initial number of girls in 1995 = 600



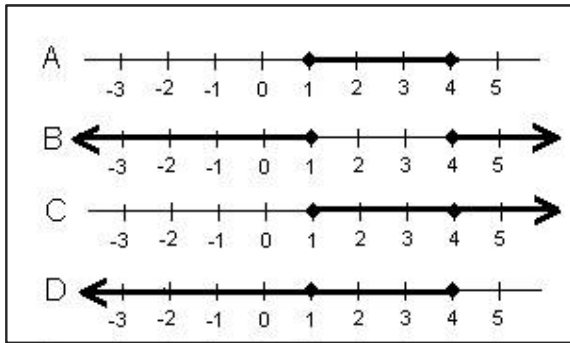
11) The number of girls studying in the school in 1998 was:

- A. 700
- B. 900
- C. 800
- D. 750

12) The ratio of the least number of students who left the school to the maximum number of girls who joined the school during the given period is:

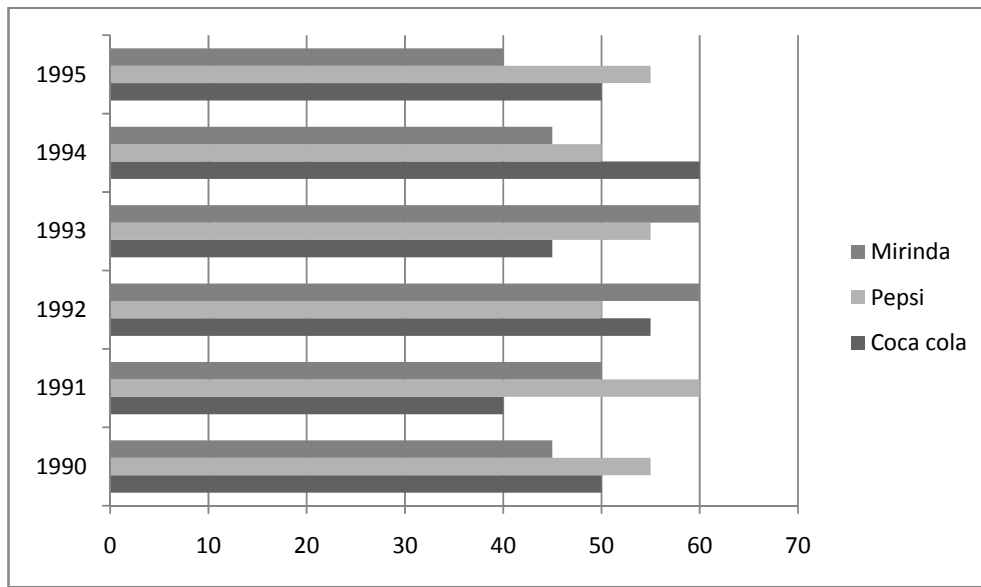
- A. 0.3
- B. 0.4
- C. 0.5
- D. 0.2

13) Which of the following is a correct picture of  $X > 1$  and  $X < 4$ ?



- A. Line A
- B. Line B
- C. Line C
- D. Line D

**Use the following diagram to answer question 14 and 15**



The bar chart above shows the three different types of cold drinks (in thousands of bottles) manufactured by Drangchu Beverages, based in Phuntsholing. The production figures are for a period of six years between 1990 – 1995.

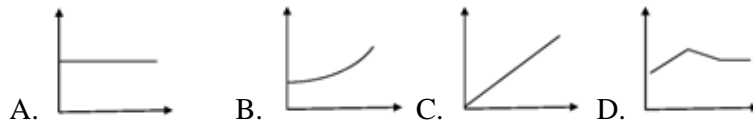
14) For which particular drink was the average annual production maximum in the given period between 1990 – 1995?

- A. Mirinda only
- B. Coca Cola only
- C. Pepsi only
- D. BothPepsi and Mirinda

15) In which year was the maximum number of pepsi bottles produced?

- A. 1990
- B. 1993
- C. 1996
- D. 1991

16) Choose the graph that best fits the statement: “The price of commodities rose in January and February, fell slightly in March and is now holding steady”.



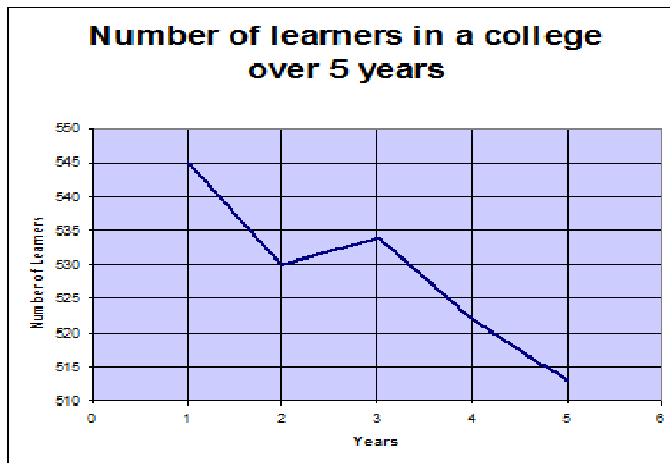
17) The table below shows books read by students and frequency. How many students read at least 4 books?

Books read	Frequency
0	9
1	3
2	6
3	5
4	10
5	2

- A. 10
- B. 12
- C. 9
- D. 5



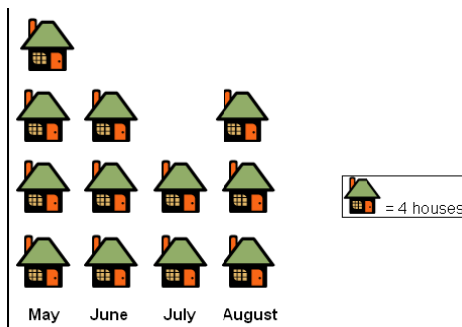
18)



Which of the statements best describes what is shown on the graph above?

- A. There has been no significant change in the number of learners in the last five years.
- B. There has been a small increase in the number of learners in our college over the last five years.
- C. The number of learners we have had in our college has dropped by over a 100 over the last five years.
- D. None of the above

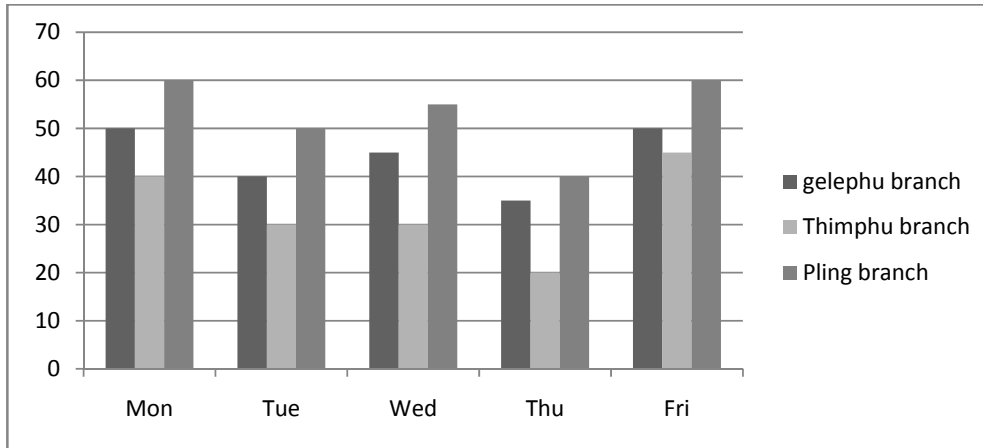
**Use the diagram below to answer question 19**



19) If six houses were sold in September, then you would show this on the pictogram by adding a fifth column of

- A. 2 ½ houses
- B. 4 houses
- C. 1 ½ houses
- D. 2 houses

The graph below shows the average daily walk- ins to Bank of Bhutan’s three main branches in Gelephu, Thimphu and Phuntsholing. **Use the graph to answer question 20 and 21**



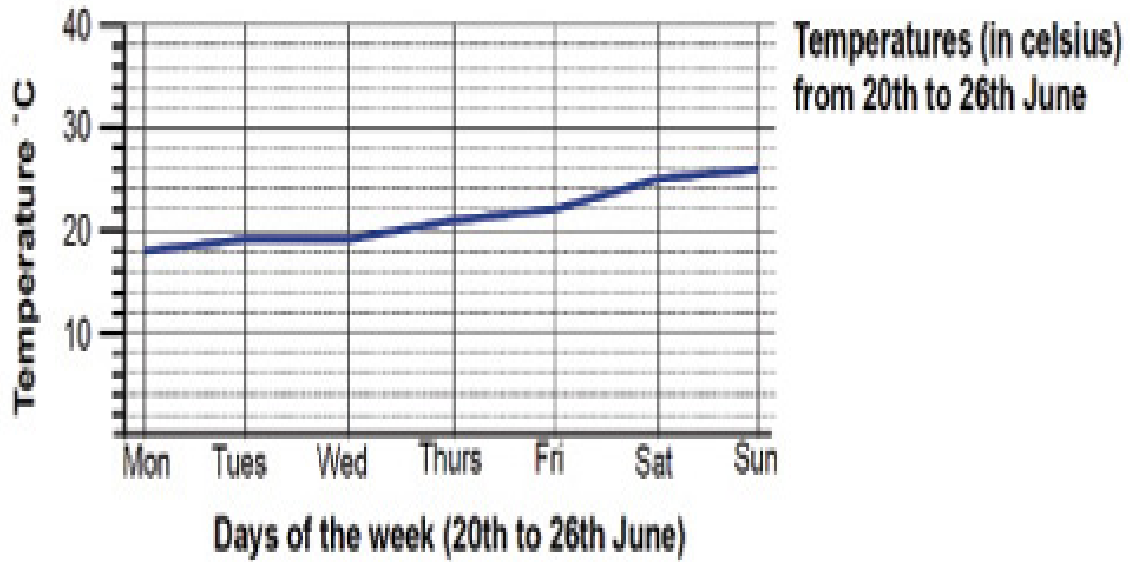
20) On what day would you expect the three Bank of Bhutan Branches to receive the lowest total number of walk – in customers?

- A. Monday
- B. Thursday
- C. Tuesday
- D. Wednesday

21) During a week the average number of walk in customers at the Thimphu branch is approximately:

- A. 30
- B. 31
- C. 33
- D. 35

**Use the following line graph to answer question 22 and 23**



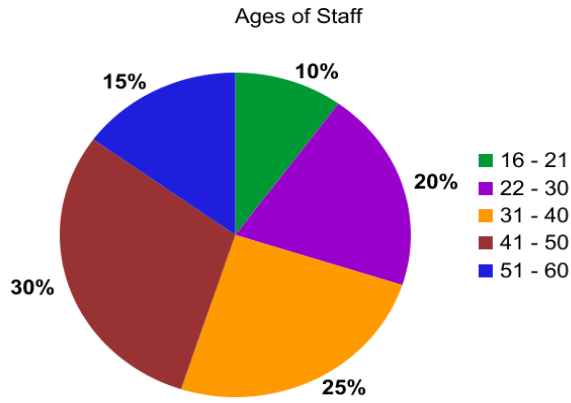
22) Which were the warmest and the coldest day?

- A. Tuesday and Wednesday
- B. Sunday and Monday
- C. Monday and Saturday
- D. Sunday and Thursday

23) Between which two days did the biggest change in temperature take place?

- A. Between Wednesday and Thursday
- B. Between Monday and Tuesday
- C. Between Saturday and Sunday
- D. Between Friday and Saturday

**Use the pie chart below to answer question 24**



24) If there is 300 staff at this office, how many are 31 – 40 years old?

- A. 25
- B. 50
- C. 75
- D. 100

**Use the graph below to answer question 25**



25) Which of the following statements is true?

- A. The number of members in 2002 was half the number in 2001
- B. The number of members in 2005 was double the number in 2001
- C. The number of members in 2005 was five times the number in 2001
- D. The number of members in 2003 was double the number in 2001

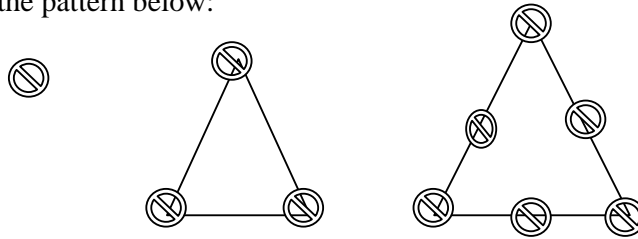
### SECTION III PROBLEM SOLVING

This section consists of 25 multiple-choice questions. Answer all the questions. Each question has four optional responses (A, B, C, D). Choose the correct response. *(25 x 1 = 25 Marks)*

- 1) Tashi likes teenagers but hates children, he likes running but hates walking, he likes swimming but hates the water, he likes trees but hates flowers, he likes jeeps but hates cars and he likes beef but hates pork. From the following what does Tashi like?

- A. Onions
- B. Rabbits
- C. Minivans
- D. Chicken

- 2) Look closely at the pattern below:



If the pattern continues, how many dots will be in the next triangle?

- A. 7
  - B. 15
  - C. 10
  - D. 20
- 3) You as a teacher have to be at school by 8.00. Assume it takes you 15 minutes to get dressed, 20 minutes to eat and 35 minutes to walk to school. What time should you get up every morning to get to school on time?

- A. 7:50 am
- B. 5:30 am
- C. 6:00 am
- D. 6:50 am

- 4) If you start with a one digit integer, multiply by 3, add 8, divide by 2 and subtract 6, you will get the integer back. Is the integer

- A. 3
- B. 5
- C. 4
- D. 2

5) Here is a series of numbers.

1  
11  
21  
1211  
111221  
312211  
13112221

What is the next number in the sequence?

- A. 1113213211
- B. 1132121211
- C. 1112313211
- D. 1113212311

6) Pema has two bags. The first bag contains a ton of feathers and the second bag contains a ton of stones. Which of the following statements is TRUE?

- A. The bag of stones weighs heavier than the bag of feathers.
- B. The bag of feathers is lighter than the bag of stones.
- C. The bag of feathers and the bag of stones weigh the same.
- D. The bag of stones weighs twice as much as the bag of feathers.

7) If 7 cats can catch 7 rats in 7 minutes. How many cats does it take to catch 140 rats in 140 minutes?

- A. 20 cats
- B. 15 cats
- C. 10 cats
- D. 7 cats

8) A teacher has three different books which she is trying to arrange on a bookshelf. In how many can she arrange the books on the shelf?

- A. 9 ways
- B. 6 ways
- C. 27 ways
- D. 3 ways

9) If Tashi is older than Pema, Pema is older than Karma. Karma is younger than Tashi and Deki is older than Tashi. A listing of the girls from oldest to youngest would be

- A. Deki, Tashi, Pema and Karma
- B. Tashi, Deki, Pema and Karma
- C. Pema, Tashi, Deki and Karma
- D. Karma, Tashi, Pema and Deki

10) You are the sports custodian in your school and you have to arrange a tennis match for 16 players for the monsoon season. If there can be no draws how many games must be played if each player can be eliminated by one loss?

- A. 12 games
- B. 14 games
- C. 16 games
- D. 15 games

11) Your boss asks you for a word that he/she can use in place of “change”. Which of the following would you give?

- A. allure
- B. altar
- C. allude
- D. alter

12) On her first birthday, her mom gifted Pelki with Nu 100. On each birthday after that she doubled her previous gift. By the day after Pelki’s seventh birthday, what was the total amount that her mom had given her?

- A. 12,000
- B. 800
- C. 12700
- D. 1600

13) What is the missing number?  $83 - 17 = 56 + ?$

- A. 15
- B. 10
- C. 20
- D. 12

14) My father is four times as old as me. In 20 years, he will be only twice as old as me. How old is my father and how old am I?

- A. 32 and 8
- B. 40 and 10
- C. 36 and 9
- D. 60 and 15

15) If Deki's job is to recruit, develop and manage staff in her organization, which among the following is her designation?

- A. personal manager
- B. personnal manager
- C. personnel manager
- D. personality manager

16) If you were asked to list down all the numbers between 1 to 100. How many times would you write the number 2?

- A. 20 times
- B. 18 times
- C. 19 times
- D. 21 times

17) If you unscramble the letters ECEATHR, you will get the name of:

- A. country
- B. ocean
- C. profession
- D. flower

18) Dago spent  $\frac{1}{3}$  of his birthday money. Then he lost  $\frac{1}{2}$  of the rest. He now has only Nu 100 left. How much did he get for his birthday?

- A. 200
- B. 300
- C. 350
- D. 250



19) A student had an average of exactly 84 marks after taking three tests. On the fourth test, he scored 96%. The average for all four tests is

- A. 84
- B. 86
- C. 87
- D. 82

20) There are 20 chickens, 4 dogs and 8 horses on a farm. How many legs are there?

- A. 88
- B. 98
- C. 78
- D. 108

21) What is the colour of Ling Gesar's black horse?

- A. brown
- B. white
- C. dark brown
- D. black

22) If the time in city A is three hours ahead of the time in city B, what time would it be in city A if a city B clock one hour behind the time shows 4 o'clock?

- A. 1 o'clock
- B. 6 o'clock
- C. 7 o'clock
- D. 8 o'clock

23) Tashi's mother has three children. One of them is called Pema and the other is Deki. What is the third child called?

- A. Inadequate information to answer the question
- B. Karma
- C. Tashi
- D. None of the above

- 24) Suppose two boys can read three books in four days. At the same rate, how long will it take eight boys to read a dozen books?
- A. 2 days
  - B. 5 days
  - C. 4 days
  - D. 3 days
- 25) A man and his son were in a car crash. The father was killed and the son was taken to hospital with serious injuries. The examining doctor exclaims, "But this is my son!" What is the relationship between the doctor and the patient?
- A. Doctor and patient
  - B. Father and son
  - C. No relationship
  - D. Mother and son

## SECTION IV

### General Awareness

This section consists of 25 multiple-choice questions. Answer all the questions. Each question has four optional responses (A, B, C, D). Choose the correct response. *(25 x 1 = 25 Marks)*

- 1) Who among the following educational thinkers is known for his seminal work on educational change?
  - A. Michael Fullan
  - B. Lev Vygotsky
  - C. Swami Vivekananda
  - D. Howard Gardner
  
- 2) According to an 'Executive Order' issued by the Royal Government in March 2010, what was the Royal Education Council (REC) established as?
  - A. an autonomous educational evaluation and review organization
  - B. an autonomous educational quality assurance organization
  - C. an autonomous research organization
  - D. an autonomous teacher professional development organization
  
- 3) At which of the following universities was His Majesty the King Jigme Khesar Namgyal Wangchuck conferred an honorary degree of Doctor of Economics?
  - A. University of Melbourne (Australia)
  - B. University of Aberdeen (UK)
  - C. University of Texas (US)
  - D. Keio University (Japan)
  
- 4) The book 'Sherig Saga' published by the Centre for Educational Research & Development is a documentation of:
  - A. stories about Bhutan's educational institutions
  - B. stories about Bhutan's eminent educationists
  - C. stories about Bhutan's educational achievements
  - D. stories about Bhutan's contributions to international education
  
- 5) Who among the following educational philosophers advocated "naturalism" and spoke of a method which keeps children away from society?
  - A. Thomas Aquinas
  - B. Jean Jacques Rousseau
  - C. John Dewey
  - D. Mahatma Gandhi Realism

- 6) Which among the following organizations published the ‘Tertiary Education Policy of the Kingdom of Bhutan, 2010’?
- A. Royal Civil Service Commission
  - B. Royal Education Council
  - C. Ministry of Education
  - D. Royal University of Bhutan
- 7) The title of which of the following is called ‘The Silken Knot’?
- A. standards for English for Schools in Bhutan
  - B. standards for Math for Schools in Bhutan
  - C. values education curriculum
  - D. driglam namzha syllabus
- 8) What is the former Bhutan Board of Examinations (BBE) now known as?
- A. Royal Bhutan Council for School Examinations and Assessment
  - B. Royal Council for School Examinations and Assessment
  - C. Council for Bhutan School Examinations and Assessment
  - D. Bhutan Council for School Examinations and Assessment
- 9) In which year was the Samtse College of Education established as a Teacher Training Institute (TTI)?
- A. 1961
  - B. 1969
  - C. 1966
  - D. 1968
- 10) Who among the following educationists was awarded the prestigious Druk Thuksey medal for his meritorious service to education in Bhutan?
- A. Dr. Jagar Dorji
  - B. Father Mirenda
  - C. Dasho Pema Thinley
  - D. Father William Joseph Mackey
- 11) Which among the following intelligences is not listed in Howard Gardner’s theory of multiple intelligences?
- A. psychosomatic intelligence
  - B. linguistic intelligence
  - C. spatial intelligence
  - D. bodily-kinesthetic intelligence

- 12) Who among the following Secretaries in the Royal Government was once the Director of Education?
- A. Sangay Zam
  - B. Nima Wangdi
  - C. Dasho (Dr) Sonam Tenzin
  - D. Dasho Sonam Tshering
- 13) Which of the following schools was established in 1913 as a Hindi medium school?
- A. Bitekha Lower Secondary School
  - B. Jakar Higher Secondary School
  - C. Trashigang Middle Secondary School
  - D. Ugyen Dorji Higher Secondary School
- 14) Who among the following was the first Director of Education in Bhutan?
- A. Nari Rustomji
  - B. Lyonpo Jigme Thinley
  - C. Lyonpo Dawa Tshering
  - D. Lyonpo Nado Rinchen
- 15) What is the organization previously known as Curriculum and Professional Support Division in the Ministry of Education now called?
- A. Department of School Curriculum and Professional Services
  - B. Department of Curriculum Research and Development
  - C. Department of Curriculum Change and Implementation
  - D. Department of Curriculum Development Services
- 16) In educational literature, which of the following is not considered a personality type?
- A. the deceptive
  - B. the enterprising
  - C. the conventional
  - D. the investigative
- 17) When was the first major international workshop on 'Educating for Gross National Happiness' held in Thimphu?
- A. from 15 to 20 December 2008
  - B. from 10 to 15 December 2010
  - C. from 7 to 12 December 2009
  - D. from 20 to 25 December 2011

- 18) Who wrote the book 'Quality of Education in Bhutan: The Story of Growth and Change in the Bhutanese Education System' (2005)?
- A. Dr. Singye Namgyel
  - B. DASHO Pema Thinley
  - C. Michael Rutland
  - D. Dr. Jagar Dorji
- 19) Who established the Sang Chokhor Buddhist college/university in Paro in 1765?
- A. Choglay Trulku Sacha Tenzin
  - B. Chogyal Mingyur Tenpa
  - C. Tenzin Drugda
  - D. Lama Jangchub Tsundru
- 20) Who among the following educational thinkers wrote about the value of "experiential learning" in education?
- A. Amartya Sen
  - B. B.F. Skinner
  - C. John Dewey
  - D. Dr. APJ Abdul Kalam
- 21) Who among the following was awarded the *2011 Gusi Peace Prize* in the Philippines?
- A. Dasho Kinzang Wangdi
  - B. Dasho Neten Zangmo
  - C. Lyonpo Sonam Tobgay
  - D. Lyonpo Thakur S Powdyel
- 22) Who among the following did not serve as Principal of the Institute for Language and Culture Studies (ILCS)?
- A. Lama Norbu Wangchuk
  - B. Mynak R. Tulku
  - C. Lama Gyalwang Nyima
  - D. Dilgo Khentse Rinpoche
- 23) Who among the following did not serve as Principal of Sherubtse College?
- A. Dr. Jagar Dorji
  - B. Tshewang Tandin
  - C. Dr. Phub Rinchen
  - D. Dorjee Tshering

- 24) Which of the following is not an objective of the Ministry of Education for the 10<sup>th</sup> Five Year Plan?
- A. increase the number of teacher educators with PhD degrees by about 30% from the existing figure.
  - B. develop a more sustainable education system through private participation and cost sharing measures.
  - C. enhance equitable distribution of experienced and qualified teachers across all schools.
  - D. promote an education industry based on high academic quality.
- 25) Which of the following is not one of the stages in Lawrence Kohlberg' theory of moral education?
- A. the instrumental-relativist orientation
  - B. the divine-enlightenment orientation
  - C. the "law and order" orientation
  - D. the universal-ethical-principle orientation

**-THE END -**

**Rough Work Page starts here:**



